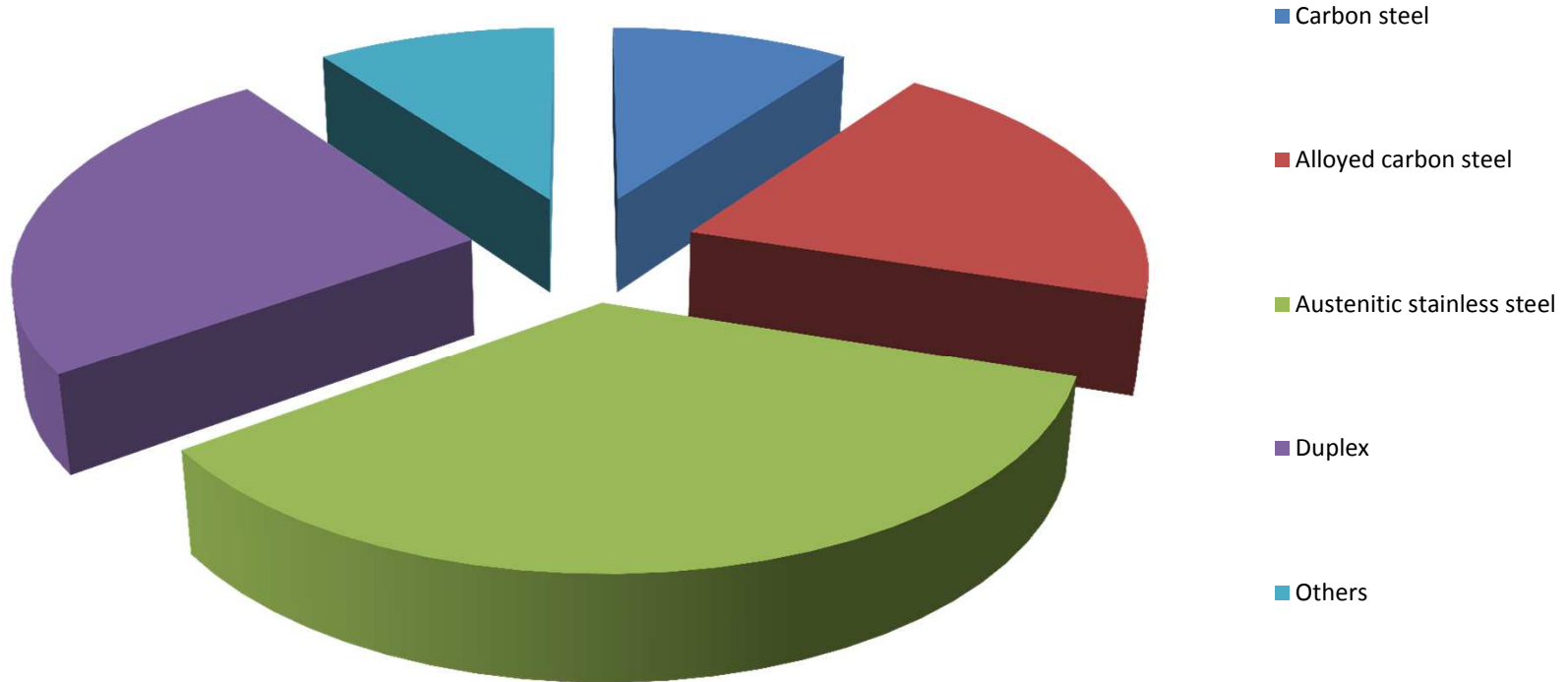


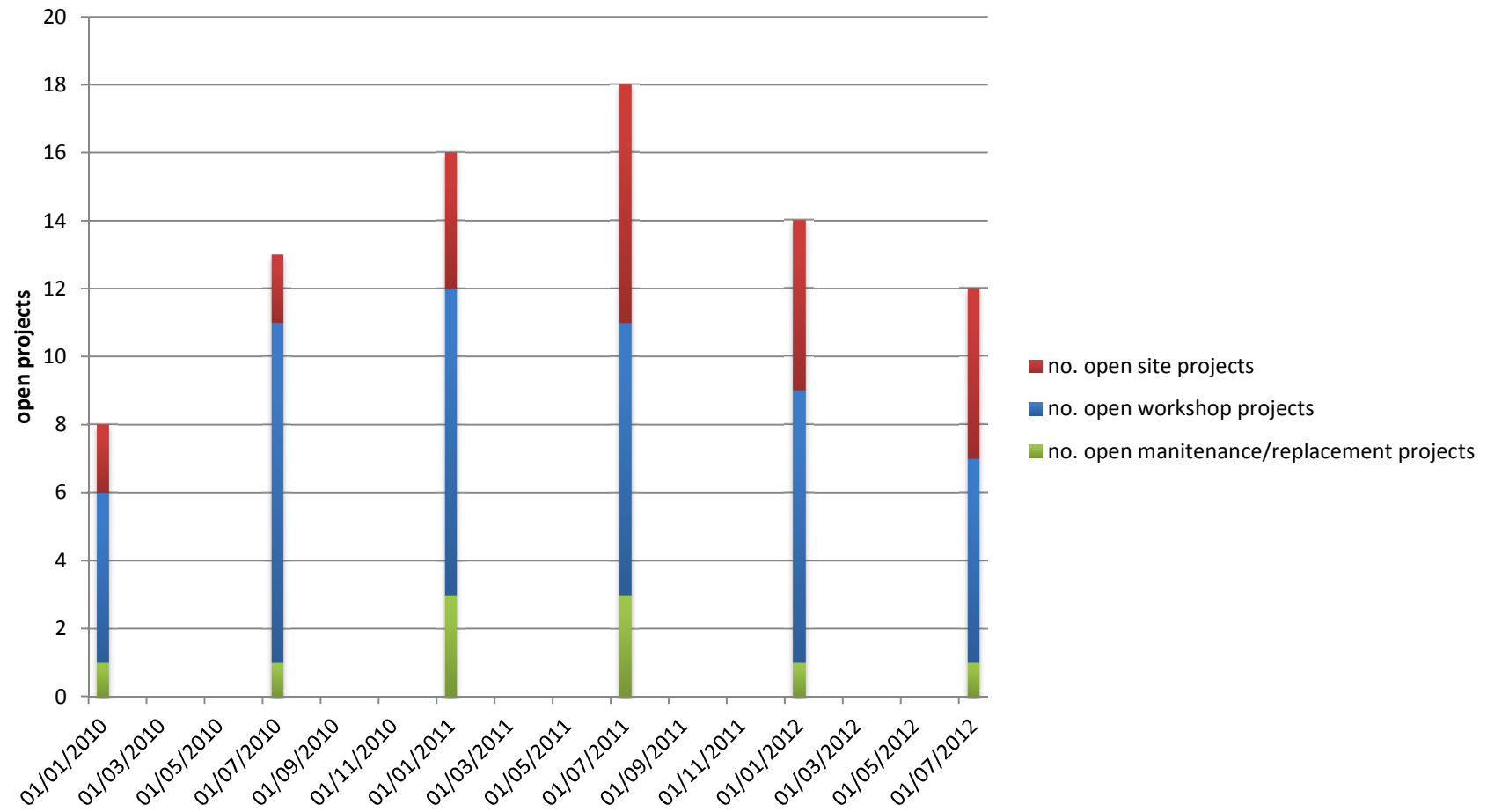
SITE PROJECTS OVERVIEW

Cital capability

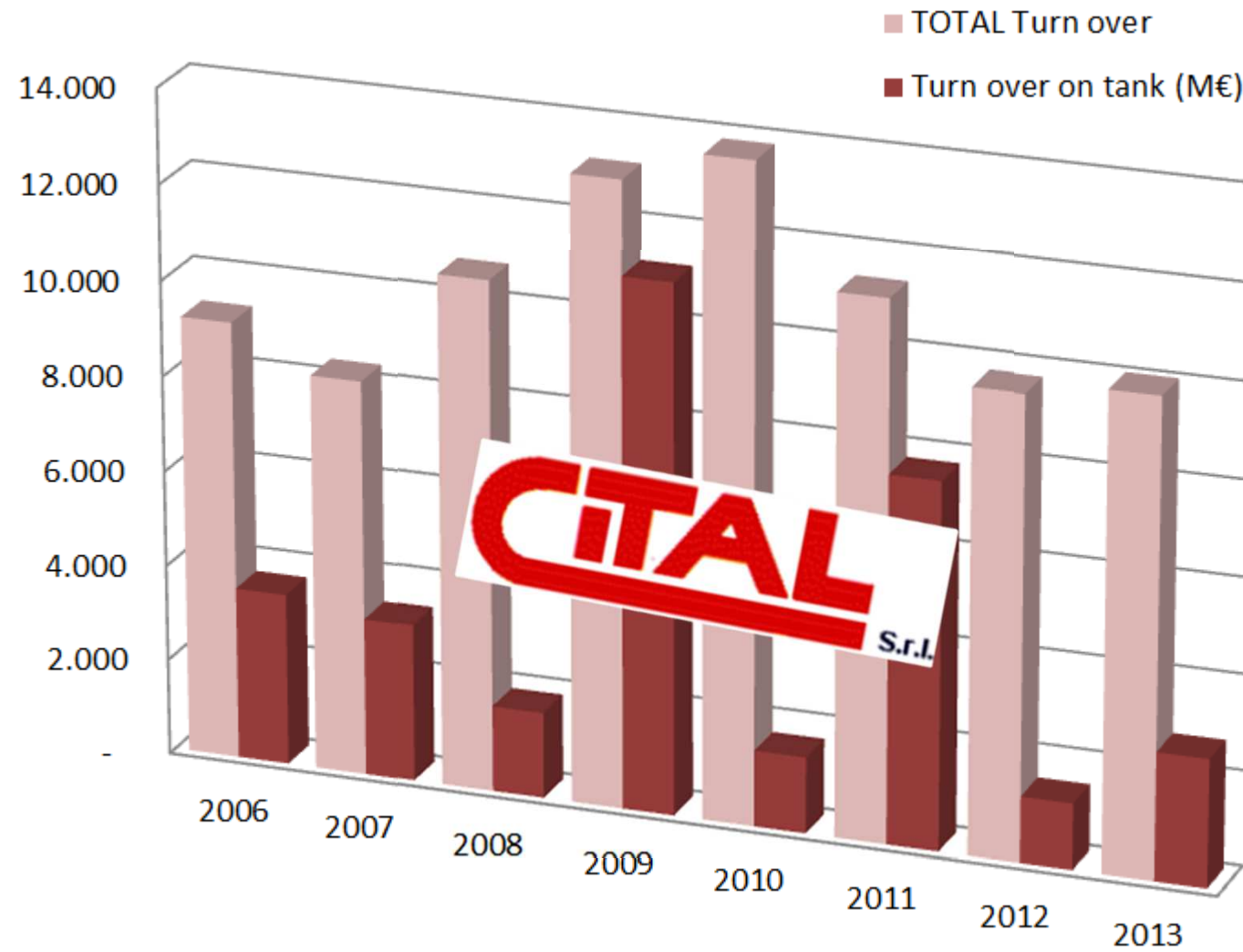
More than 1.000 ton per year
of construction



Cital production mix

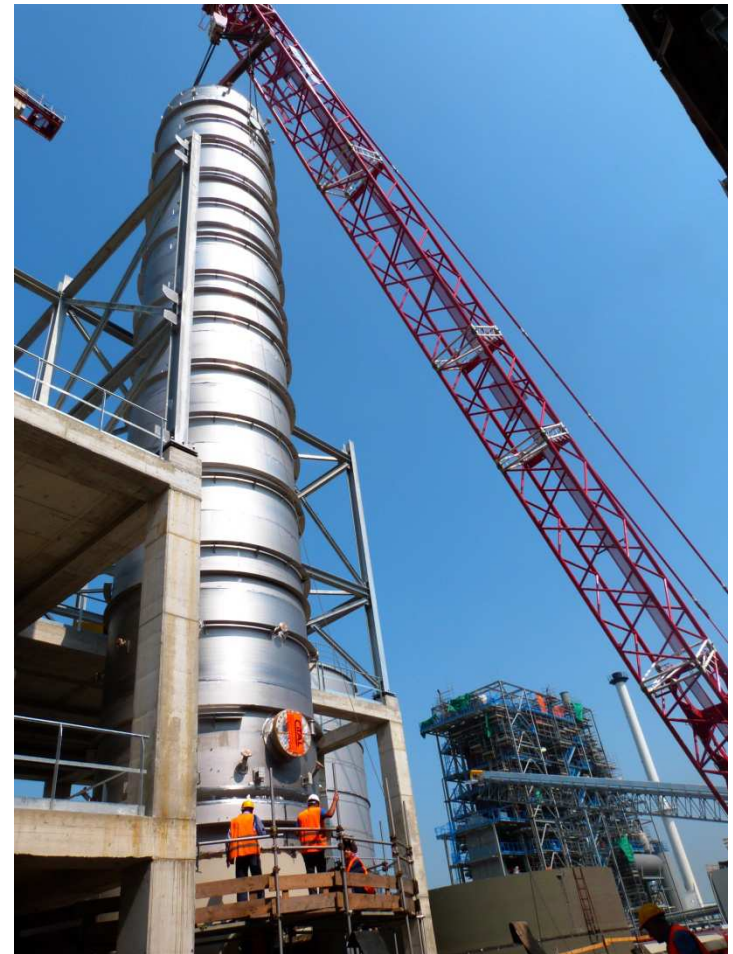


Turnover



Facts and figures

Investment in last 5 years	1 million EURO
Direct employee	50 people
Cital workforce	50-200 people
Maximum dimension performed in workshops	<u>No. 2 Reactors diam. 4,5 m for 30 m long and 100 t of weight – Italy /Brasil 2012/2013</u>
Maximum dimension performed in seafront workshop	<u>No.5 Columns in AISI 316Ti and SAF2205 from diameter 1,6 m to 4,2 m of 30-50 m of unit length – Germany - 2009;</u>
Bigger site work	2.000 t IPB Italy 2011/2012



Seafront workshop

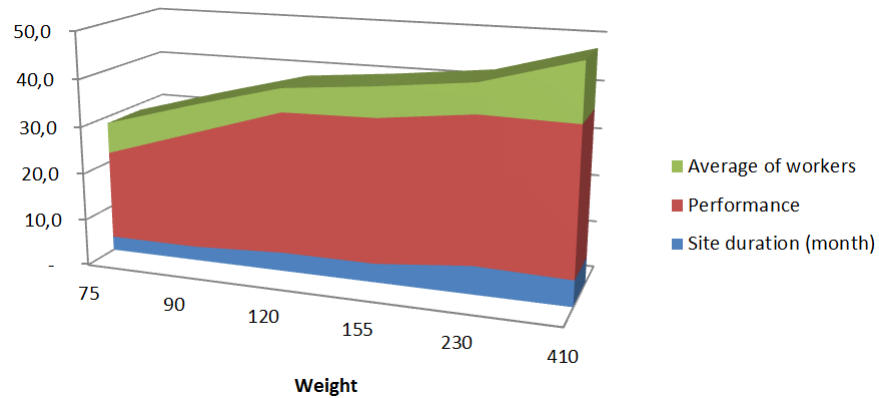


Diameter	Height	Base material	Shell Thicknesses	Head thicknesses	Weight
<i>mm</i>	<i>mm</i>		<i>mm</i>	<i>mm</i>	ton
3000	44.000	316Ti	12,10	18,15	51
3500	38.750	316Ti	15,12	18,15	58
4200	26.900	SAF2205	12	15	47
2400	49.300	316Ti	12,10	15,12	42
1600	24.500	316Ti	7	8	12

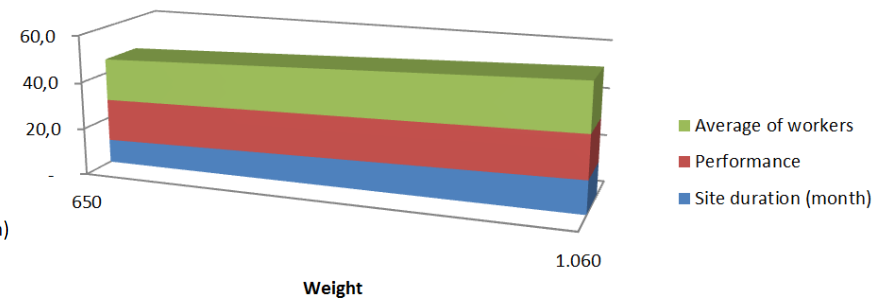


Typical Performance

TANK FARM with all tanks same dimension



TANK FARM with tanks different dimension



1466 TEREOS PROJECT

Bioethanol plant in Origny - France – Year 2006



TEREOS PROJECT

Supply of n.08 fermentors 2.000 m³/each in LDX2101/304

Tank no.	Total m ³	Installed [t]	Site activities (weeks)	Maximum site workload (no.)
8	16.000	300	30	12

Supplied services:

Design

Prefabrication

Erection

Testing

Insulation

1485/1486 DALJ PROJECT

Beverage alcohol in Aalst – Belgium – Year 2007;



DALJ PROJECT

Supply of n.10 fermentors 300 to 800 m³/each in LDX2101/304 for

Tank no.	Total m ³	Installed [t]	Site activities (weeks)	Maximum site workload (no.)
10+9	9.000	450	24	16

Supplied services:

Design

Prefabrication

Erection

Testing

Pipe racks





1518 SEDAMYL PROJECT

Beverage alcohol plant in Saluzzo – Italy – Year 2008;



SEDAMYL PROJECT

Supply of n.05 fermentors 1.500 m³/each in 304

Tank no.	Total m ³	Installed [t]	Site activities (weeks)	Maximum site workload (no.)
5	7.500	160	16	6

Supplied services:

Design

Prefabrication

Erection

Testing

Pipe racks

Realized for the same site:

Columns

Pipe racks

Heat exchangers

Steel structures



1561 VIVERGO PROJECT

Bioethanol plant in Hull – UK – Year 2009/2010;



VIVERGO PROJECT

Supply of n.09 fermentors 4.300 m³/each in LDX2101/304

Supply of n.11 small fermentors and process tanks from 300 to 800 m³/each in LDX2101/304

Tank no.	Total m ³	Installed [t]	Site activities (weeks)	Maximum site workload (no.)
20	45.000	1.100	56	24

Supplied services:

Design

Prefabrication

Erection

Testing







Crescentino PROJECT

Bioethanol plant II Generation in Crescentino – Italy – Year 2011/2012;



Report

Supply of n.23 process tanks in LDX2101/304

Tank no.	Total m ³	Installed [t]	Site activities for tank erection (weeks)	Maximum site workload for tank erection (no.)
23	30.000	1.000	56	18

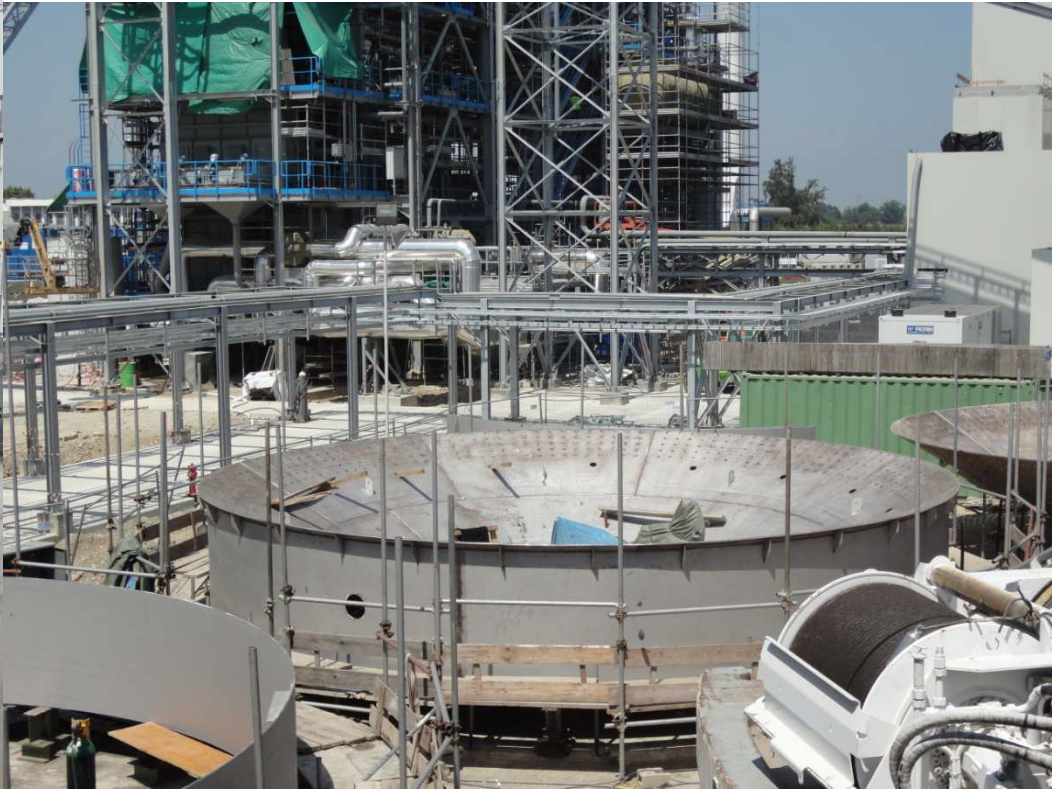
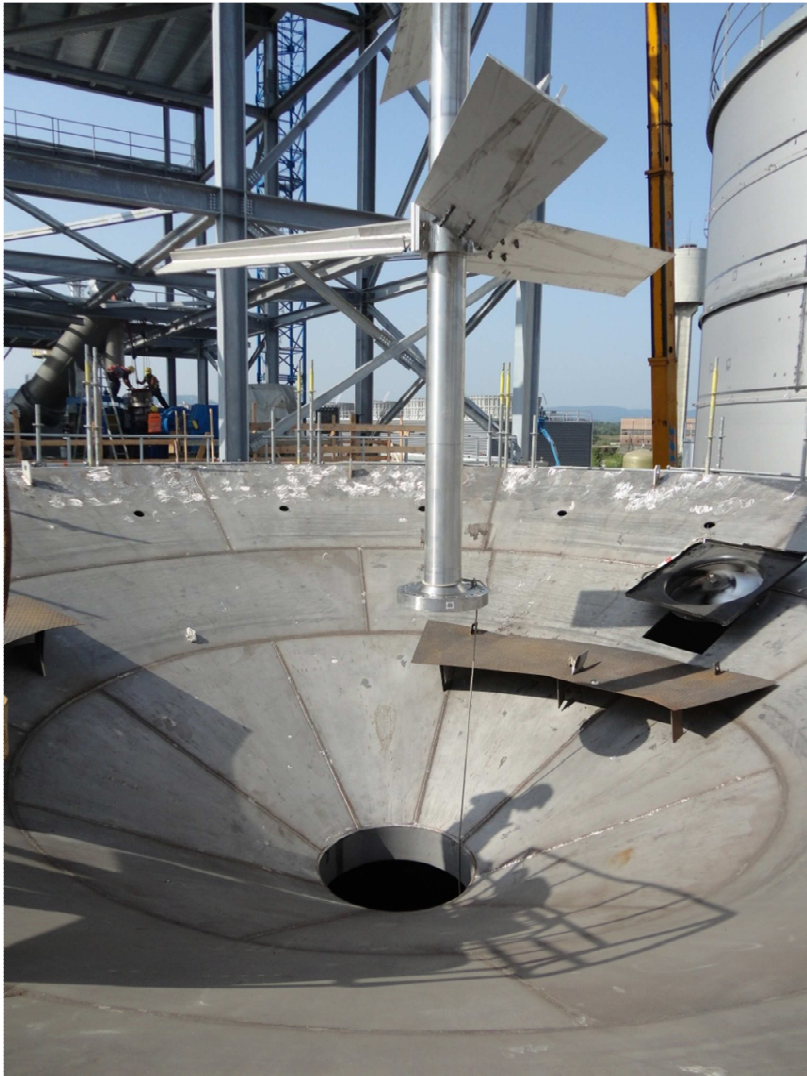
Supplied services:

Design
Prefabrication
Erection
Testing
Insulation
Scaffolding
Painting

Realized for the same site:

Columns
Pipe racks
Steel structures
Supervision







CITAL S.R.L. HEADQUARTERS
Via Maestri del Lavoro N° 13
12039 Verzuolo (CUNEO) ITALY



TEL. **+39 (0)175 85427**
+39 (0)175 87609



FAX. **+39 (0)175 87974**



MAIL: **info@cital.it**

